

Grind'n Brew™ Series

Single Bean Grinderbrewers



Model 10H
(Airpot sold separately)



Model 11H
(Decanter sold separately)



Bean Usage
Counter

Digitally controlled Single Bean Grind'n Brew™ Brewer System. Brewer will maintain brew temperature to $\pm 1^\circ\text{F}$ throughout brew cycle. Brew temperature, brew volume (full and half batch), grind portions (full and half batch), operator defined pre-infusion/pulse brewing, energy savings and Low Temp/No Brew are programmable from the front display.



GRINDMASTER™
CORPORATION

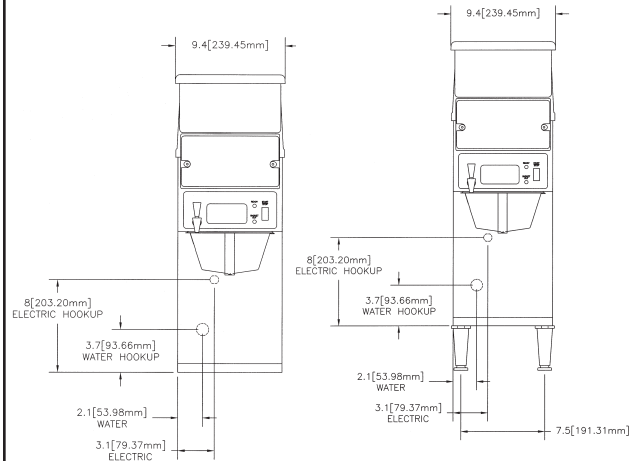


GRINDMASTER™
CORPORATION

Single Bean Grindbrewers

Features:

- Single Bean Grind'n Brew™ System - 3-Function capability: Grind only; Brew only; Grind'n Brew™. Digitally controlled with PRECISION BREW™ Technology.
- Space-saving design eliminates the need for both brewer and grinder.
- Bean Usage Counter - Controller records volume of beans used from the hoppers.
- Grind Time - Grind time for half and full batch can be set from front of brewer.
- Shutter mechanism keeps water vapor separated from grind head.
- Precise Brew Temperature - The brewer will hold the brew temperature to +/- 1°F during the complete brew cycle.
- Brew Volume - Can be set by 'teach' mode to eliminate trial-and-error set-up.
- Pulse brewing/pre-infusion - Allows the brew sequence to extract up to 20% more dissolved solids per batch of coffee. Programmable: number of pulses, pulse-on time and pulse-off time. Changing the pulse sequence does not affect the brew volume.
- Low Temp/No Brew - Allows the brew cycle to begin only when the water has reached the optimum brew temperature.
- Programming Lock-Out - The brewer settings can be "locked" to prevent tampering.
- Energy Savings/Coffee Old - The warmers, on 11H series models, can be programmed to shut off up to 240 minutes from the last brew cycle.



Front View - 11H

Front View - 10H

Specifications	Model 10H/10HE	Model 10HQ	Model 11H/11HE	Model 11HQ
Volts / Watts / Amps	10H: 120V / 1710W / 15A 10HE: 230V / 3214W / 14A	120/240V / 3560W / 15A	11H: 120V / 1810W / 15A 11HE: 230V / 3306W / 14.4A	120/240V / 3660W / 16A
No. of Bean Hoppers	1	1	1	1
Hopper Size	5-1/2 lbs. (2.5 kg)	5-1/2 lbs. (2.5 kg)	5-1/2 lbs. (2.5 kg)	5-1/2 lbs. (2.5 kg)
Brew Capacity	74 oz. (2.2L)	74 oz. (2.2L)	64 oz. (1.9L)	64 oz. (1.9L)
Dimensions (H x W x D)	31" x 9-1/4" x 24-1/4" (78 cm x 23 cm x 61 cm)	31" x 9-1/4" x 24-1/4" (78 cm x 23 cm x 61 cm)	26-1/4" x 9-1/4" x 24-1/4" (66 cm x 23 cm x 61 cm)	26-1/4" x 9-1/4" x 24-1/4" (66 cm x 23 cm x 61 cm)
Ship Dimensions (H x W x D)	32-1/4" x 15-1/2" x 29-3/4" (81 cm x 39 cm x 74 cm)	32-1/4" x 15-1/2" x 29-3/4" (81 cm x 39 cm x 74 cm)	32-1/4" x 15-1/2" x 29-3/4" (81 cm x 39 cm x 74 cm)	32-1/4" x 15-1/2" x 29-3/4" (81 cm x 39 cm x 74 cm)
Weight	75 lbs. (33.75 kg)	75 lbs. (33.75 kg)	75 lbs. (33.75 kg)	75 lbs. (33.75 kg)
Ship Weight	80 lbs. (36 kg)	80 lbs. (36 kg)	80 lbs. (36 kg)	80 lbs. (36 kg)
Listings	UL, CUL, UL San., CE, RoHS (E model only)	UL, CUL, UL San., CE	UL, CUL, UL San., CE, RoHS (E model only)	UL, CUL, UL San., CE

All specifications are subject to improvement or change without notice.



GRINDMASTER™
CORPORATION



Grindmaster® Coffee Grinders and Brewers • PrecisionBrew™ Brewing Systems • Espresso® Espresso Machines
Crathco® Hot Beverage Dispensers • Crathco® Cold and Frozen Beverage Dispensers • AMW Coffee and Tea Systems
Tel (502) 425-4776 • Fax (502) 425-4664 • 1-800-695-4500 (USA & Canada only)

P.O. Box 35020 • Louisville, KY 40232 • USA

www.grindmaster.com • email: info@grindmaster.com